

Case Study

Weener XL Den Bosch

Customer A local government agency who helps people find employment

Location 's-Hertogenbosch, Netherlands

Requirements To establish a reliable connection between patch cabinets with singlemode fibre cable and Cat6A cable.

Equipment 100-701, 200-952, 201-601, 100-582, 190-191, 542-42810-GSBF-GW, 542-300-42-GE, 200-364, 200-602, 200-448, 200-362, 100-140, WB9.65G, 200-362, 100-993, 205-324, 200-157, 100-181, 100-181-24, 100-095, 201-137, 200-603, 202-105, 200-398F, 542-044-GE-SCHUKO, 555-084, 205-324

excel
without compromise.

Weener XL is a work and development company in the city of 's-Hertogenbosch, Netherlands. It focuses on providing support and opportunities to people who need assistance in the job market. Their goal is to create equal opportunities for everyone in the city to achieve financial security. They needed a cable installation that would provide a robust and scalable network infrastructure that could transfer data across different building and floors. The existing ceiling infrastructure presented a challenge as it was not suitable for the installation of new Wi-Fi and access points until completion of the project.

Why Excel?

The installer for this project was Excel Cabling Partner, RJ Networks & Security, with the support of Excel Distribution Partner, Connectron Network Systems. Both organisations are long-standing partners with Excel Networking Solutions, and they knew Excel Networking products were of the highest quality that matched the specific technical requirements for this project.

Excel Networking's comprehensive product range enabled the installer to purchase all essential components from Connectron Network Systems – a local Excel Networking support hub in the Netherlands - including cabling, patch panels, and racks, from a single trusted vendor. This streamlined the procurement process and ensured seamless compatibility between components. Furthermore, Excel Networking's reputation for reliability and adherence to industry standards was crucial for constructing a robust and scalable network infrastructure. Their solutions, coupled with robust support and warranty options, instilled confidence in both the durability and performance of their products over time. Excel Networking were the ideal choice to support the project's objectives for high-performance and secure networking solutions.

Edwin Gerritsen, Infrastructure process and contract manager, Weener XL:

"Excel Networking's commitment to sustainability, especially their plastic-free packaging, aligns perfectly with our values and made them the ideal choice for this project. They are a trusted brand with a solid track record, which made it an easy choice for us when selecting the right partner for this project."



The Installation

The Weener XL network infrastructure was designed with a server-terminal architecture, where users connect to redundant servers via terminals. To support this architecture, a combination of fibre optic and copper cabling was deployed. Cat6A cabling was used and has a 25-year warranty from Excel Networking and meets ISA/IEC certification standards.

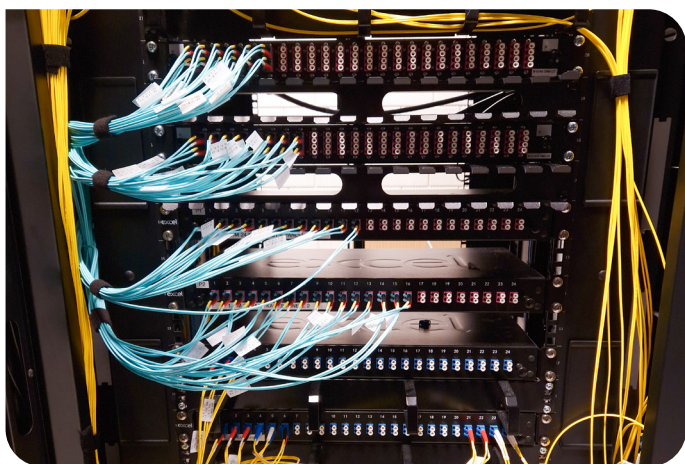
Fibre optic cables were used for the backbone infrastructure, providing high-speed, long-distance connectivity and redundancy. For shorter distances and as a backup, Cat6A copper cables were also used.

Cat6A (U/FTP) cables were installed to meet the communication and security needs of the network. 24-port RJ45 FTP Cat 6A patch panels and distribution panels were mounted securely and installed within network cabinets, offering Class EA/Augmented Category 6A link performance over distances of up to 90m which supports the applications including 10GBASE-T, 10 Gigabit Ethernet, giving the performance needed to support the new Wi-Fi technology and wireless data speeds now and into the future.

There was a need for network cabinets to be installed in the server and storage rooms and 42U cabinets with glass doors, grounding rails and surge protection were specified. The system includes IP-based communication and security equipment such as intercoms and cameras for access control. A central security console from UTC Fire & Security (ATS4500A-IP-AM) is installed, supporting up to 512 zones with an IP54 protection rating.

The installation is certified under various international and national standards and the data transmission complies with ISO/IEC 11801 (class Ea) and ANSI/TIA-568-C.2.

PoE (Power over Ethernet) compatibility was required to support IEEE 802.3af (PoE) and 802.3at (PoE+).



The Result

By successfully addressing the challenges and leveraging Excel Networking's wide range of products and solutions, the Weener XL infrastructure is now well equipped to support the organisation's growth and changing needs. The products from Excel Networking have a comprehensive 25-year warranty to provide peace of mind.

Speaking after the installation, Carl van der Pol, project leader/Information management consultant, Weener XL said:

"We needed a future-proof network to support our long-term goals, and Excel Networking's products have given us the confidence that our infrastructure will stand the test of time."



Excel House
Junction Six Industrial Park
Electric Avenue
Birmingham B6 7JJ
England

T: +44 (0) 121 326 7557
F: +44 (0) 121 327 1537
E: sales@excel-networking.com

www.excel-networking.com

Mayflex MEA DMCC
Office 22A/B
AU (Gold) Tower
Cluster I
Jumeirah Lake Towers (JLT)
Dubai
United Arab Emirates
PO Box 293695

T: +971 4 421 4352
F: +971 4 421 5814
E: mesales@mayflex.com

excel
without compromise.